

PART OF THE N.W. 1/4, SEC. 34, T.6N., R.1W., S.L.B. & M.

HIGHLAND ADDITION

AMENDED

BLOCKS 3 & 4

IN OGDEN CITY

SCALE 1" = 50'

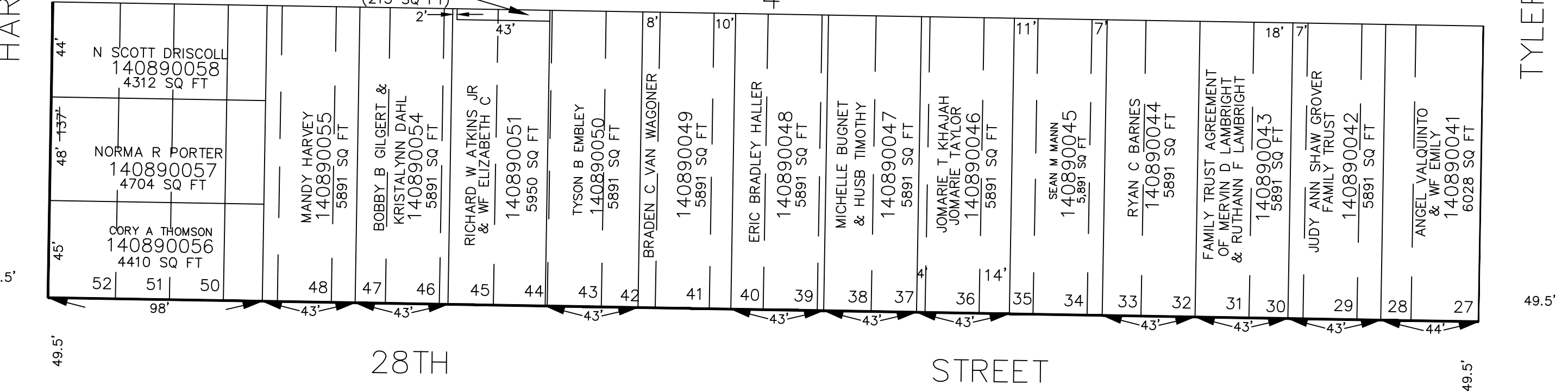
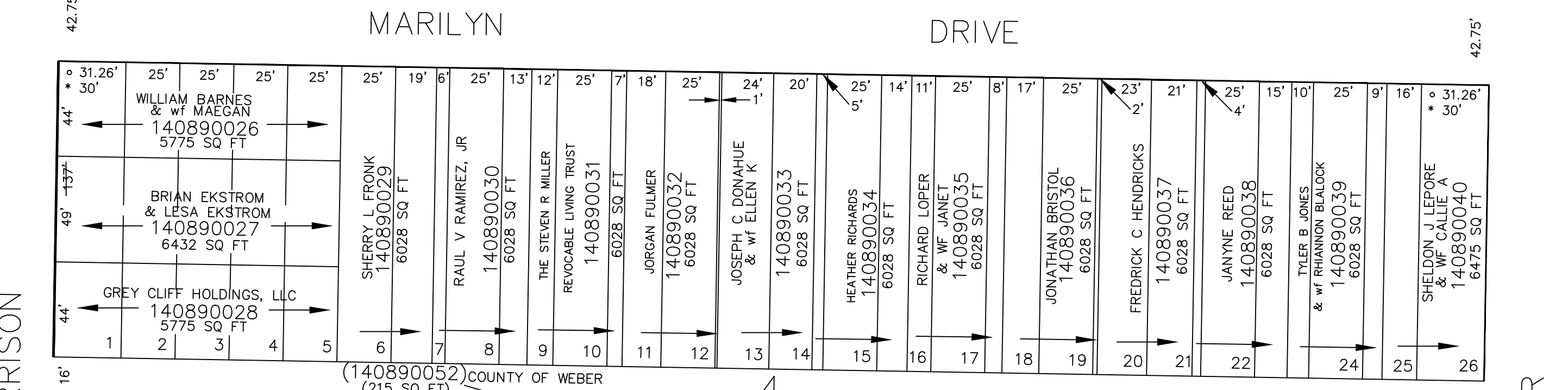
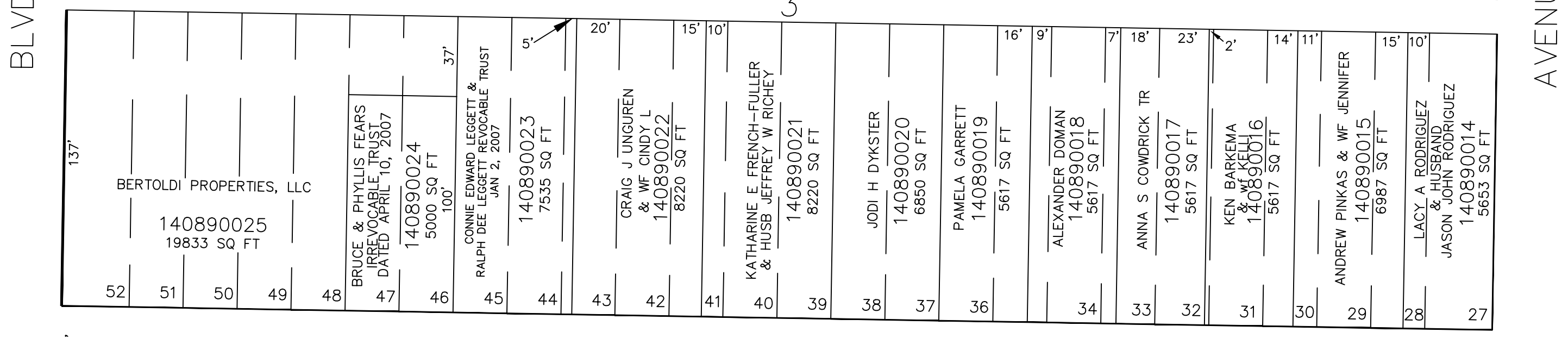
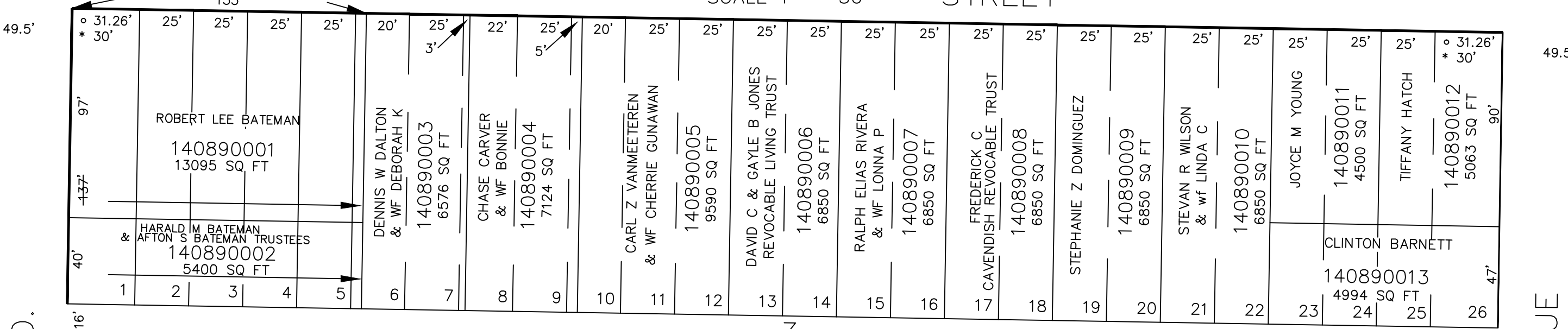
FOR COMPLETE ENG DATA SEE ORIGINAL DEDICATION PLAT IN BOOK 5, PAGE 1 OF RECORDS.

TAXING UNIT: 25

SEE BK. 2, PAGE 18

27TH

STREET



28TH

STREET

SEE BK. 2, PAGE 15

SEE PAGE 88